



Taylor Farm Park

TALK ABOUT A DOG'S LIFE!

One thing's certain about East Norwalk's Taylor Farm Park: It's pet friendly!

What was once the Marvin-Taylor farm property, Taylor Farm Park is a 30-acre open space once called "one of the fairest domains in Southern New England."

Matthew Marvin first bought 10 acres here in 1790, and is a descendant of one of Norwalk's earliest residents. In 1836 William Marvin moved into what was the new 19-room farmhouse. Eventually he acquired more land adjacent to the property. Marvin Elementary School sits today where his house was then.

William Marvin's great-grandsons, William Marvin Taylor and Frederick Bradford Taylor, sold what remained of the family's property to the city in 1968. In 1970, ten acres were designated for the new Marvin School, and thirty acres were turned into Taylor Farm Park. *How about those history bites?!*

The land was sold to the city to remain as open space. Taylor Farm Park is home to antique car shows and hot-air balloon festivals, but most of the time it's one of the best places to take the dog for some running around.

About 4.5 acres of land make up for the best area for your best friends, right across from Shady Beach Park. The north and south areas are essentially split in half by a small stand of trees. The south and north areas have a picnic table with some shade. There are two large, open areas for dogs to run. For water-loving dogs the south area also has a tidal pool. Most of the pets that visit are off leash and well behaved, and the park is well known for hosting a wide variety of dog breeds.

Another reason to love East Norwalk.

A Calf Pasture Primer

0.12 miles

The Marvin Property

0.29 miles

Lifeguarding History

0.32 miles

Harvesting from the Sea

0.33 miles

The British Invasion

0.38 miles

Roger Ludlow

0.59 miles

Fitch's Point

0.65 miles

A Habitat Renewed

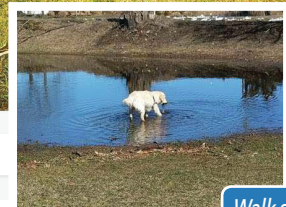
0.96 miles

The Birds

0.97 miles

Mill Pond History

0.98 miles



Walk softly...



Historical markers in close proximity to Taylor Farm Park such as Mill Pond Park (above). In the future, we will continue to highlight other important areas of E. Norwalk.

https://historicalmarkerproject.com/markers/HM1057_taylor-farm-park_Norwalk-CT.html

Summer Concert Cancellations

Dear friends and concertgoers,

As per the Norwalk Parks and Recreation Department, our concerts at Calf Pasture Beach have been canceled for this year.

We are disappointed that we will not see you this summer and we will try to bring back this year's scheduled groups in 2021.

We hope you stay safe.



Ron Scofield
Assistant General Manager

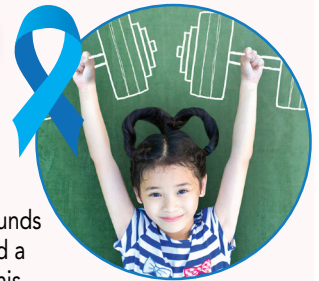


Monthly Tree Lightings

JULY

The tree is lit in blue to commemorate Juvenile Arthritis Awareness Month. The Arthritis National Research Foundation funds arthritis research to find a cure for arthritis, and this includes trying to find a cure for the hundreds of thousands of children suffering each year with this debilitating disease.

Visit curearthritis.org/juvenile-arthritis-awareness-month



AUGUST

TTD recognizes August as National Immunization Awareness Month (NIAM) with the tree being lit in green.

National Immunization Awareness Month raises awareness and encourages everyone to make sure they are current on the necessary vaccinations for potentially harmful diseases. Many diseases can be easily prevented by administering vaccines, and thus, protecting you from unseen viruses. Take the necessary precautions with a simple call to your doctor, and avoid potential harm while leading a healthy, happy life. Visit cdc.gov/vaccines



Notice to Third Taxing District Electric Department Customers

On May 18, 2020, The Commissioners of the Third Taxing District voted to reduce the Power Cost Adjustment (PCA) component of the electric rates to provide some relief to our customers in the form of a lower electric bill.

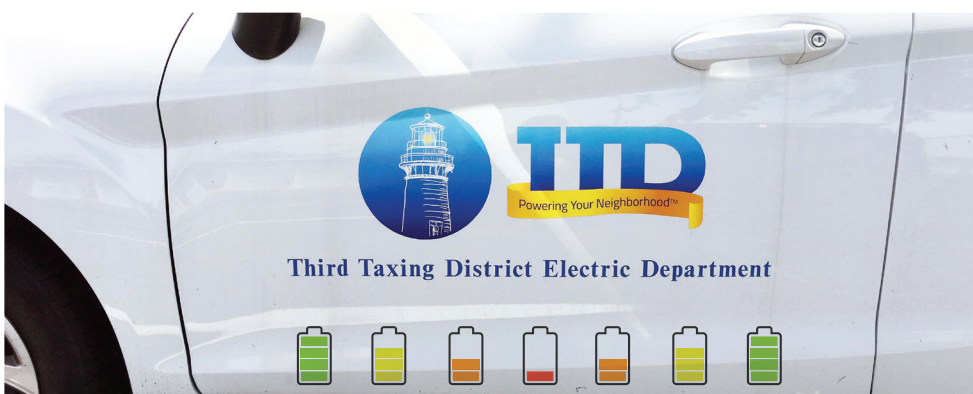
The PCA was lowered from \$0.013/kWh to \$0.00/kWh. This change will provide TTD electric customers with a savings of approximately 7-8% on their monthly electric bills. A residential customer who uses 700 kWh of electricity will see a savings of \$9.10 in their monthly electric bill.

The Commission approved this reduction for the three-month period of June, July and August 2020.

This reduction will be effective for all electric bills beginning in June 2020. Please note, with the reduction of the PCA to \$0.00/kWh, the Power Cost Adjustment line item will not appear on your bill.

Customers who are having trouble paying their electric bills are encouraged to call our office and speak to a Customer Service Representative. Our Customer Service Representatives will discuss your situation and will work with you to develop a payment plan to assist you through this difficult time.

Please call **203-866-9271** to talk to a TTD Representative. •



HELLO KIDS... Kevin Kilowatt Here!

Question...

What's one of the most important electrical "components" you carry with you every day?

Hint: You can never touch it.

GO TO TTD.GOV/TTDKIDS FOR THE ANSWER!



☎ To report a power outage during non-business hours, call 203-663-6875. ☎

Contact Information:

Johnnie Mae Weldon 203-216-2652 Chairperson
Pamela Parkington 203-858-4261 Commissioner
Michele Sweeney 203-820-3107 Commissioner

Read Auerbach 203-451-7047 Treasurer
Kevin Barber 203-866-9271 General Manager
Ron Scofield 203-866-9271 Asst. General Manager